

COURSE LOCATION

Horticulture/Forest Science Building (HFSB),
495 Horticulture Road, College Station, TX 77843, Room 119X
GPS (decimal degree): Lat. 30.60921, Long. -96.350167
<http://aggiemap.tamu.edu/?Bldg=1506>
Parking lot: 74

ADDITIONAL INFORMATION

Confirmation will be mailed to you upon receipt of the registration form.
Parking tags will be provided upon arrival

Registration:

Texas A&M AgriLife Extension Conference Services
(P) (979) 845-2604, (F) (979) 862-4511
<http://agriliferegister.tamu.edu>

Course contents and program:

Gabriele Bonaiti, (979) 862-2593

Visit us on the Web:

Water District Program:
<http://idea.tamu.edu/>

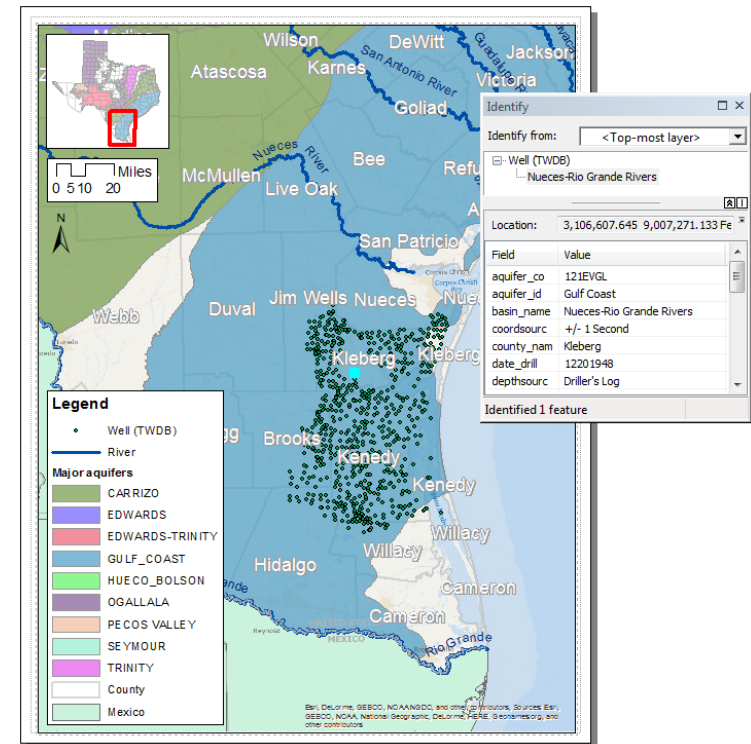
We welcome comments and suggestions on classes and scheduling.
Customized training programs and research services are also available.
All proceeds from this short course go to support education and research
to the Water District Program

Instructor

Dr. Gabriele Bonaiti
Extension Program Specialist – Water District



Geographical Information System (GIS) for Water Districts, Getting Started



November 19-20, 2014

Conducted by the
Texas A&M AgriLife Extension
Water District Program

DATE AND TIME

Wednesday, November 19, 9 AM – 5 PM

Thursday, November 20, 8 AM – 3 PM

COURSE DESCRIPTION

Geographical Information System (GIS) for Water Districts, Getting Started

With this course, participants will learn how to properly use a Geographical Information System (GIS) to create and modify map areas (such as boundaries), lines (such as rivers and pipelines), and points (such as wells, pump stations, meters) using real world coordinates, and how to store and analyze information on these features. On the first day focus will be on understanding potential use of GIS as a decision support system for water districts, and on gaining basic mapping and data organization skills. On the second day participants will learn more functionalities and practices which are needed when managing and modifying GIS data on a daily basis.

Software

Course will be conducted using the software ArcGIS for Desktop 10, by ESRI. Participants will receive copy of class material, including worksheets and slide set.

REGISTRATION

One-day training (day 1): executive training for managers and area coordinators: \$75. Two-days training: full training for technicians managing GIS: \$150. Cancellation 48 hours prior to class: \$25. Deadline: November 18. Parking and coffee breaks included. Enrollment is limited.

WHO SHOULD ATTEND THIS COURSE?

People involved in management, planning, and maintenance of water districts (such as irrigation districts, groundwater districts, river authorities, Municipal utility districts, Water control and improvement districts, Special utility districts), AgriLife personnel (specialists, agents, etc.), or anyone interested in learning more about GIS mapping. Prior experience with GIS is not necessary, but participants should be familiar with personal computers and common software.

CERTIFICATION AND CONTINUING EDUCATION CREDIT

Participants completing the course will receive a certificate acknowledging this achievement, and 13 hours of Professional Development Credit/Continued Education for Professional Engineers (PE), managers, technicians, and AgriLife personnel.

What to bring

A Personal Computer will be provided for each participant including all needed software on Wednesday and Thursday morning. Participants will need their own laptop on Thursday afternoon, when we will go through software installation procedure.

The
Texas A&M Water District Program
is a program of the
Texas A&M Agrilife Extension Service
administered through the Biological and Agricultural Engineering
Department, Texas A&M University, College Station